



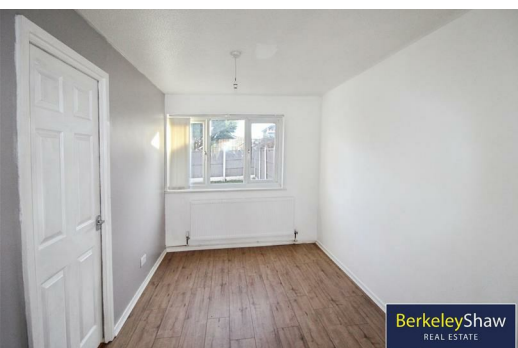
6 Roletton Close, Bootle, L30 7QE

£1,000 PCM

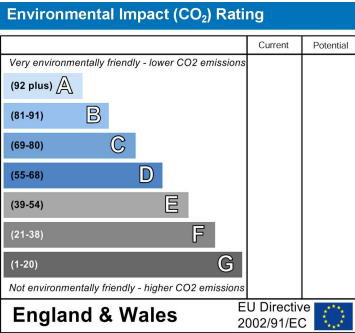
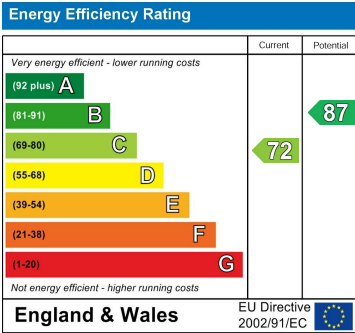
This spacious 3 bedroom semi detached house on a quiet residential estate in Bootle is ideal for families and ready to move into straight away. It has been recently refurbished throughout and is close to all local amenities and has excellent transport links.

The property has a spacious open plan lounge and dining area, good-sized kitchen, 3 bedrooms (two doubles) and a family bathroom with a 3 piece white suite and shower over bath. There are front and rear gardens and parking for two vehicles on the driveway.

Council tax band: C
EPC Rating: C
Deposit: £1000
Available immediately.



- External
- Lounge
- Dining room
- Kitchen
- Garden
- Bedroom 1
- Bedroom 2
- Bedroom 3
- Bathroom



Berkeley Shaw Estate Agents Limited.
Company No. 0784754

Berkeley Shaw Real Estate Limited.
Company No. 05206927

